



Bobbi K. Bligh, MD



TOP





Serving the health needs of the community for more than 30 years

Spotlight On...

[TOP](#)



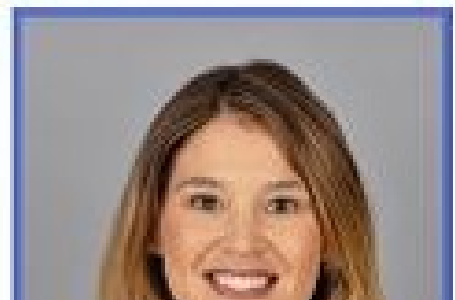
## Health Care District's Community Health Centers Exceed 10,000 Free Grab-and-Go Narcan Distributions to Save Lives from an Overdose

Health Care District's Community Health Centers Exceed 10,000 Free Grab-and-Go Narcan Distributions to Save Lives from an Overdose

[Read more](#)



*Welcome*



[TOP](#)

[View all news](#)

---

## Who We Are

An error occurred.

---

[Try watching this video on www.youtube.com](#), or enable JavaScript if it is disabled in your browser.

## Community Health Assessments

2024

2024 Implementation of the Crisis Now Model in Palm Beach County -  
Initium Health (PDF) [TOP](#)

2022

[2022 Lakeside Medical Center Community Health Assessment \(PDF\)](#)

[2022 Palm Beach County Community Health Assessment \(PDF\)](#)

[2022 Lakeside Medical Center Community Health Implementation Plan \(PDF\)](#)

[2022 Palm Beach County Community Health Improvement Plan \(PDF\)](#)

## 2019

[2019 Lakeside Medical Center Community Health Assessment \(PDF\)](#)

[2019 Lakeside Medical Center Community Implementation Plan \(PDF\)](#)

## 2018

In 2018, the Health Care District of Palm Beach County Board of Commissioners approved the Lakeside Medical Center 2015-2018 Implementation Strategy PDF.

## 2017

The 2017 Community Health Improvement Plan (CHIP) (PDF) is a collaborative effort by a diverse group of community leaders, stakeholders, Florida Department of Health in Palm Beach County and the Health Care District of Palm Beach County that serves as a directional roadmap committed to improving the health and quality of life of Palm Beach County residents.

## 2016

In 2016, the Health Council of Southeast Florida (HCSEF) was enlisted by the Health Care District and the Florida Department of Health in Palm Beach County to facilitate the Community Health Needs Assessment (PDF) to TOP identify unmet health needs of community residents and to inform and guide

future health planning initiatives to meet those needs.

The 2016 Glades Region Health Assessment (PDF) is a subset of the overall Palm Beach County Community Health Needs Assessment.

## 2012

2012 Palm Beach County Health Needs Assessment (PDF)

---

## Support

[Notice of Privacy Practices](#)

[Privacy Policy & Disclaimer](#)

[Non-discrimination Notice](#)

[ADA Notice](#)

[Department of Transportation Notice](#)

[Hospital Price Transparency](#)

[HCD Facial Covering Policy](#)

[Careers - Current Team Members](#)

## Compliance

**Compliance Hotline: 1-866-633-7233**

[Compliance Page](#)

## Public Meetings

TOP

[read all public meetings](#)

## Medical Executive Committee

**Date:** May 07, 2024

**Location:**

In-Person & Zoom Meeting - SEE MEETING DETAILS INCLUDED.

Lakeside Medical Center

39200 Hooker Highway

Belle Glade, FL 33430

## Social Media

?

?

?